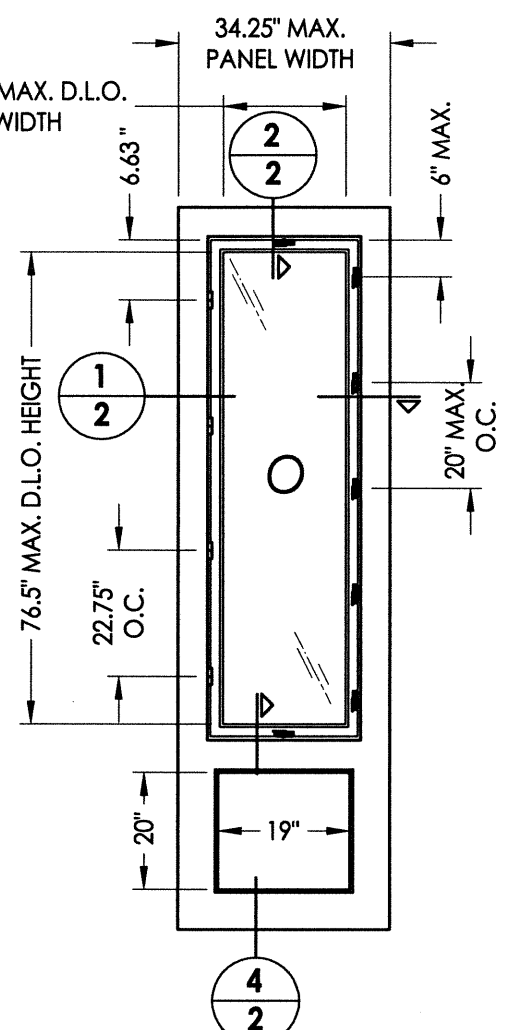
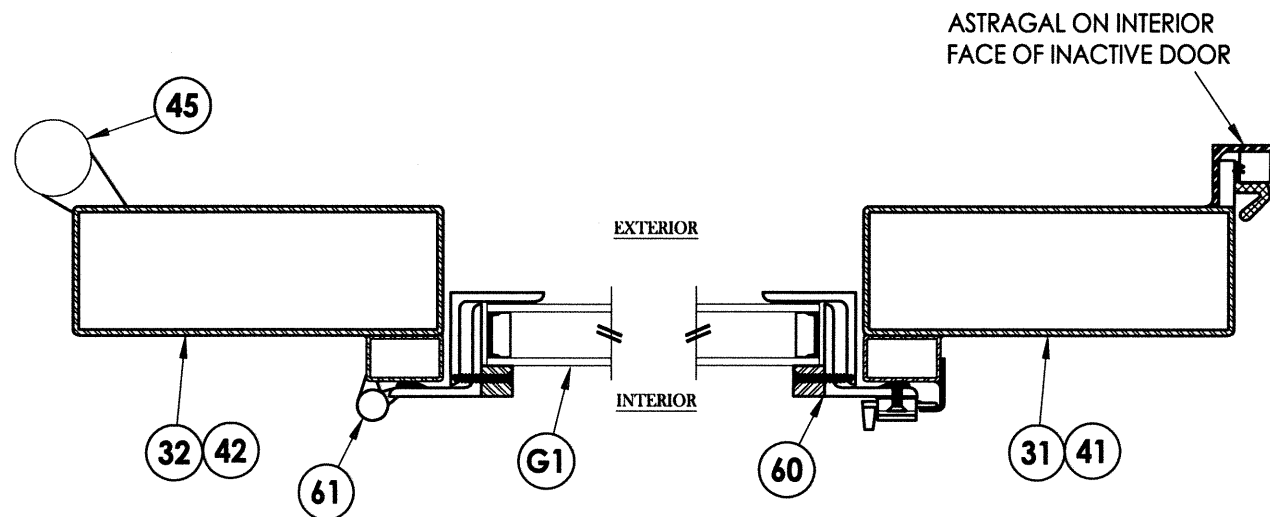


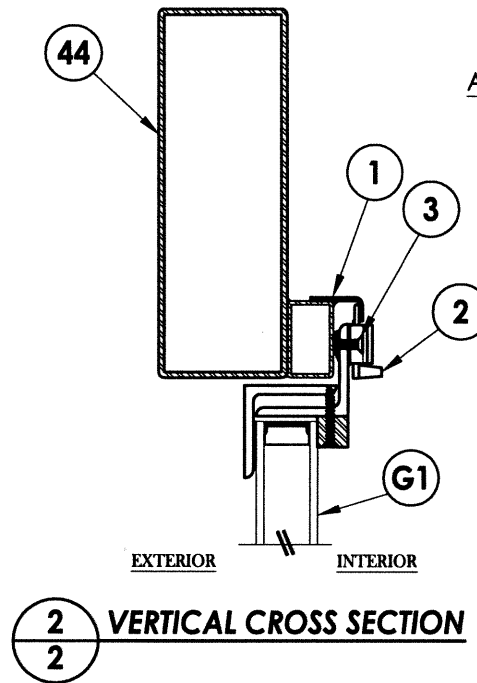
**30 DOOR PANEL**  
w/ Operable Sash



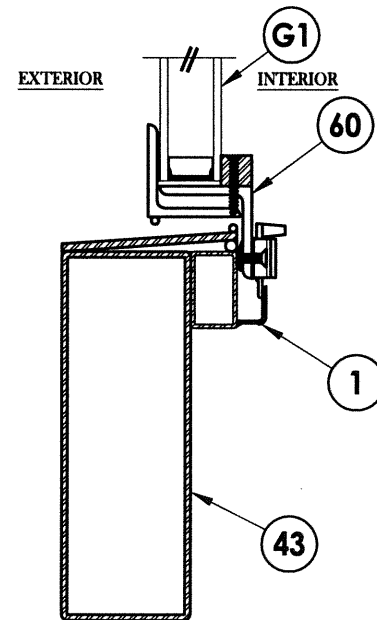
**40 3/4 LITE DOOR PANEL**  
w/ Operable Sash



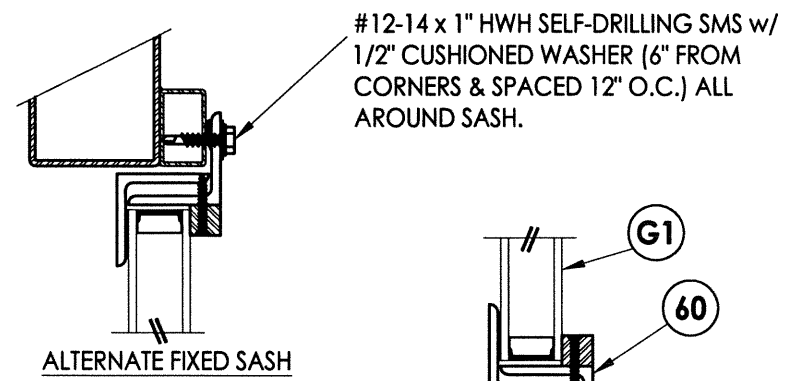
**1 HORIZONTAL CROSS SECTION**  
2 Active Door Panel Shown



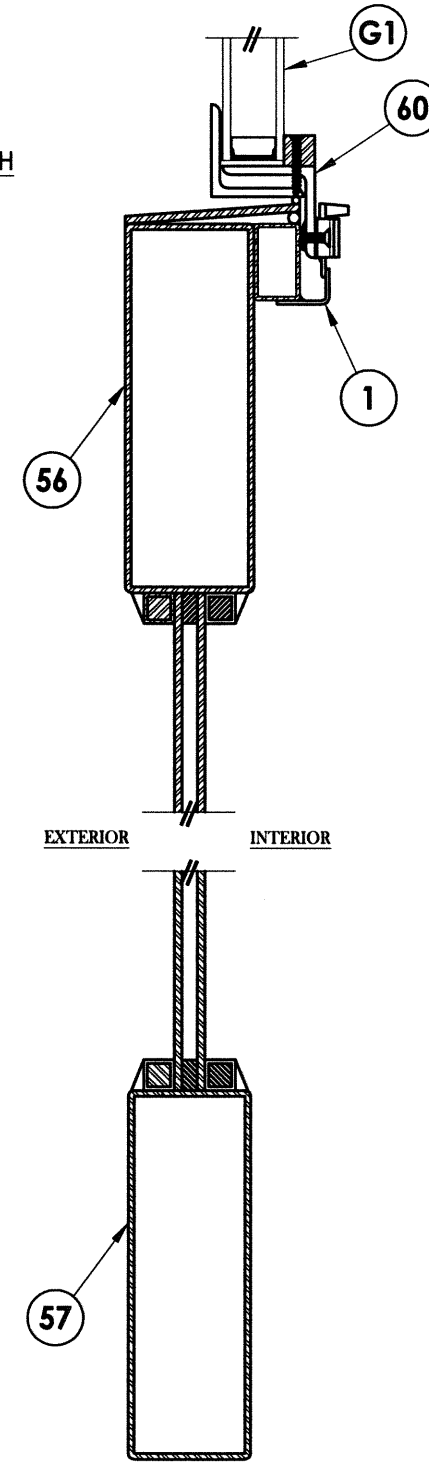
**2 VERTICAL CROSS SECTION**



**3 VERTICAL CROSS SECTION**



ALTERNATE FIXED SASH



**4 VERTICAL CROSS SECTION**

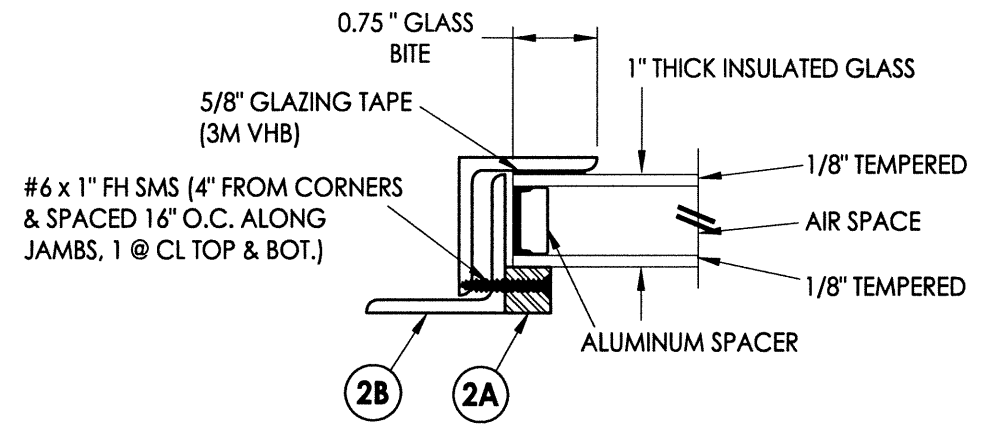
PRODUCT: CLARK HALL IRON DOORS  
PART OR ASSEMBLY: DOOR PANEL DETAILS

NO.	DATE	BY

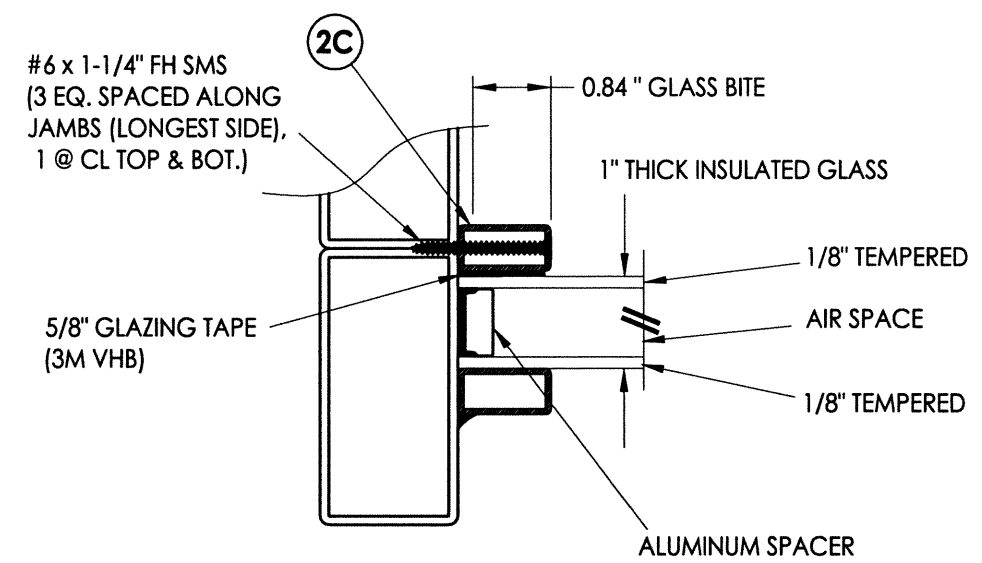
DATE: 11/8/13  
SCALE: N.T.S.  
DWG. BY: JK  
CHK. BY: LFS  
DRAWING NO.: FL-16663.6  
SHEET 2 OF 13

Documents Prepared By:  
**RW** BUILDING CONSULTANTS, INC.  
P.O. Box 230 Valrico FL 33595  
Phone No.: 813.659.9197  
Florida Board of Professional Engineers  
Certificate Of Authorization No. 9813  
17-12-30-13  
Lyndon F. Schmidt, P.E. No. 43409

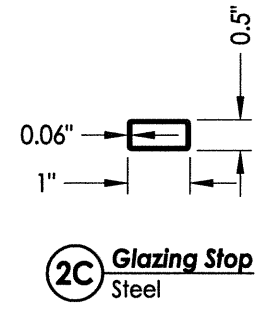
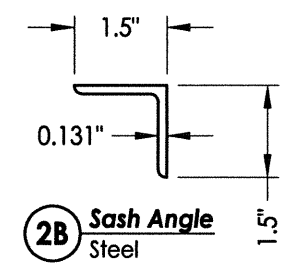
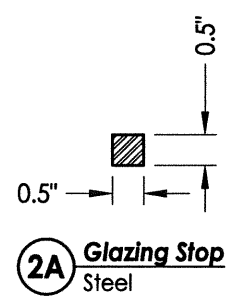




**G1** **GLAZING DETAIL**  
Operable Door/Sidelite



**G1** **GLAZING DETAIL**  
Fixed Sidelite/Transom

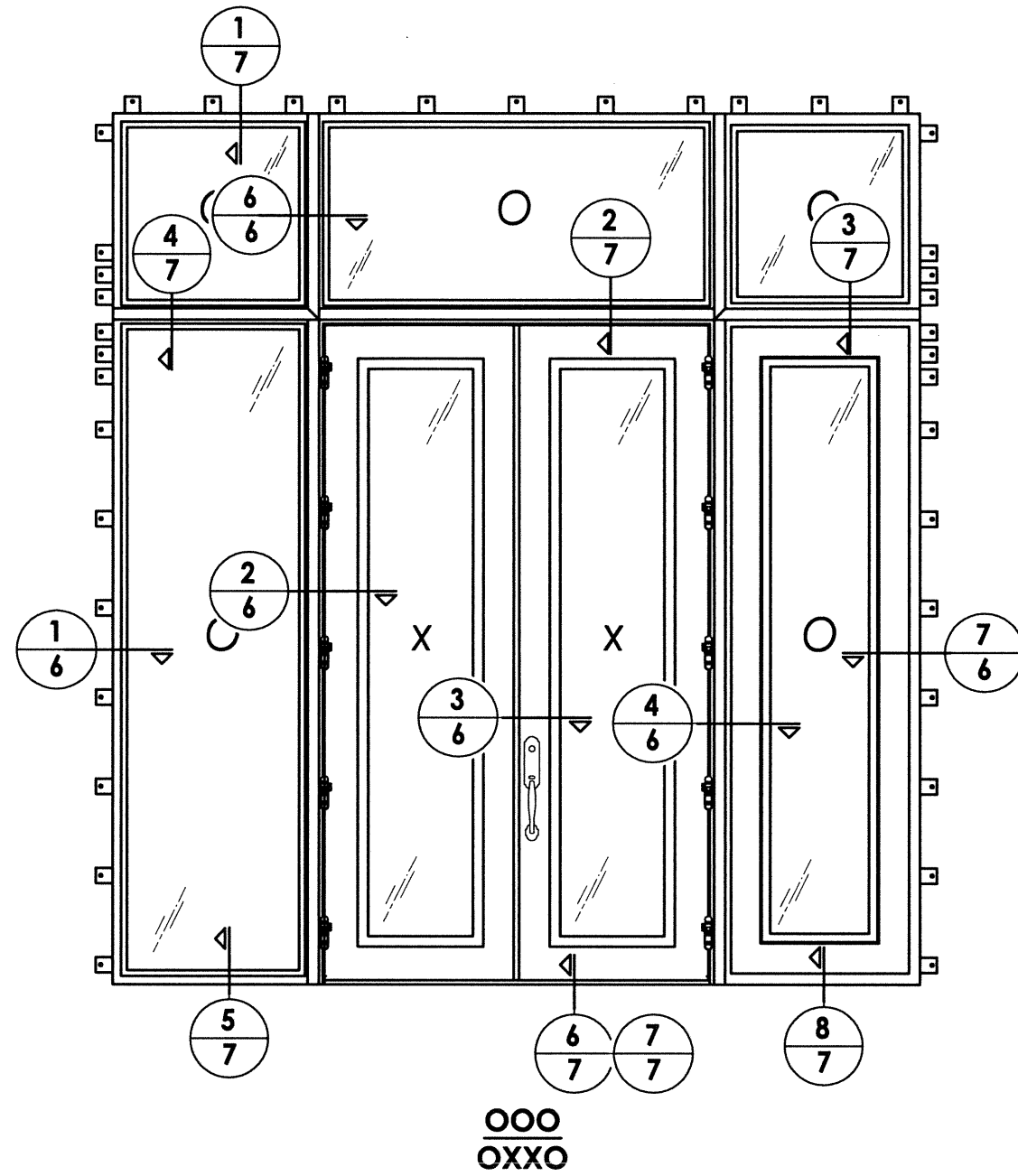
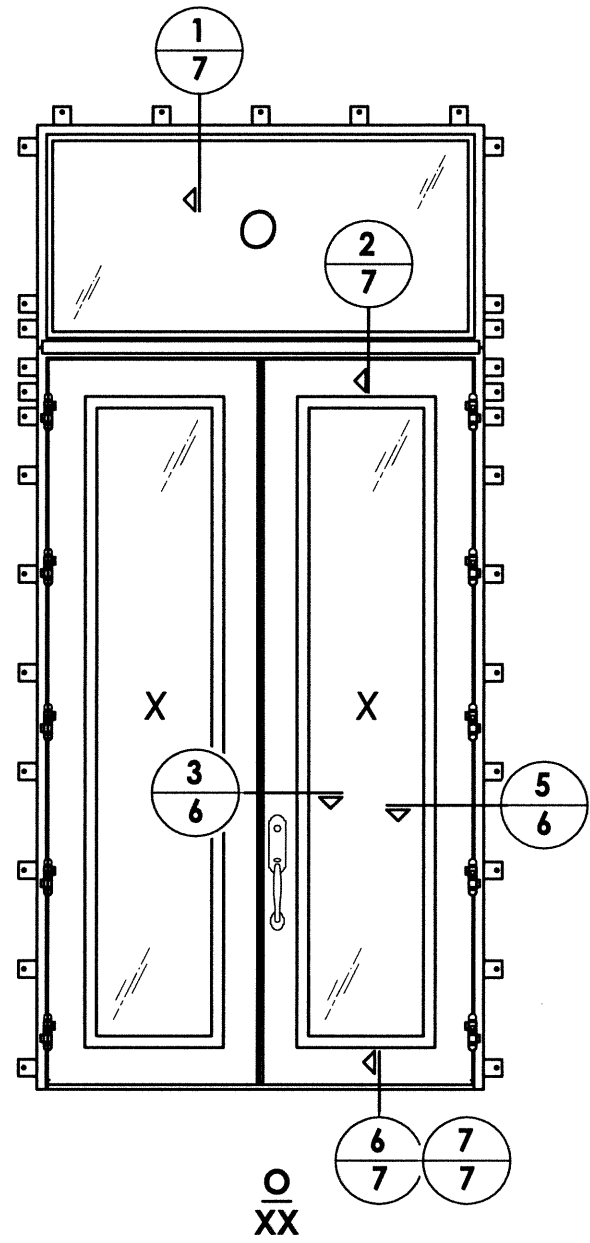
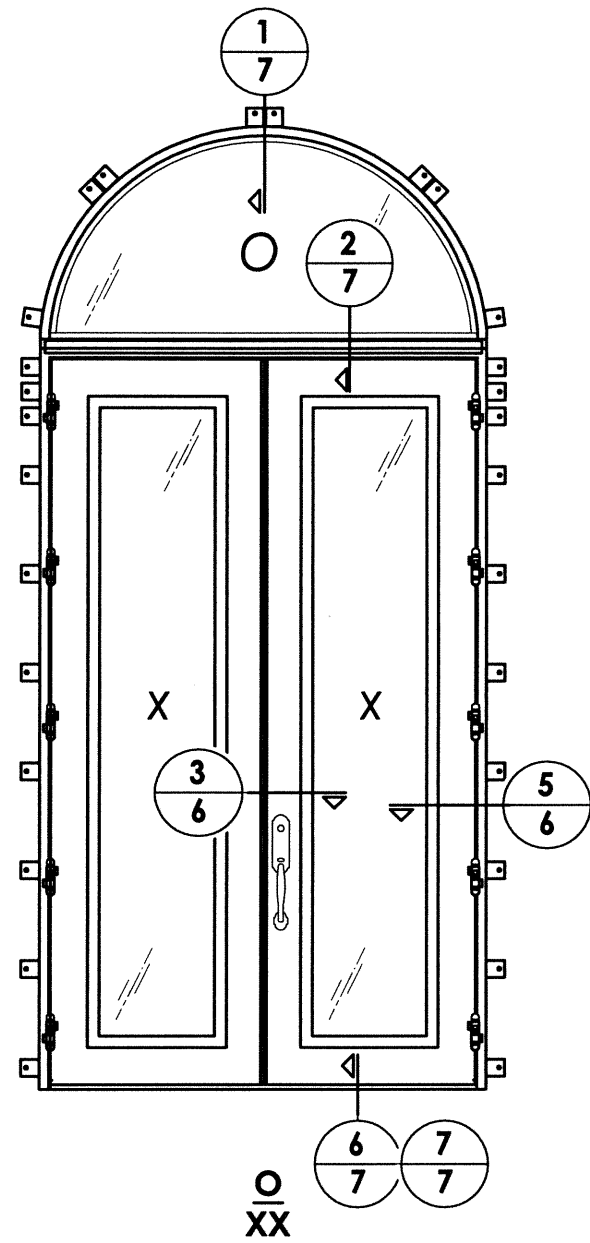


DATE:	11/8/13
SCALE:	N.T.S.
DWG. BY:	JK
CHK. BY:	LFS
DRAWING NO.:	FL-16663.6
SHEET	4 OF 13

PRODUCT:	CLARK HALL IRON DOORS
PART OR ASSEMBLY:	GLAZING DETAILS

NO.	DATE	BY	REVISIONS

Documents Prepared By:  
**RW** BUILDING CONSULTANTS, INC.  
 P.O. Box 230 Vairico FL 33595  
 Phone No.: 813.659.9197  
 Florida Board of Professional Engineers  
 Certificate Of Authorization No. 9813  
 17-12-30-13  
 Lyndon F. Schmidt, P.E. No. 43409



**LOCK HARDWARE TABLE**

MANUFACTURER	MODEL
EMTEK	TUBULAR ENTRY SET (SHERIDAN - 451812)
SUN VALLEY BRONZE ACCURATE LOCK & HARDWARE	LEVER/KNOB ENTRY SET (RIDGE: CS-421PLD) MORTISE LOCK
ASHLEY NORTON	TUBULAR ENTRY SET (SQTUB w/ 900 SERIES KNOB)
ASHLEY NORTON ACCURATE LOCK & HARDWARE	MORTISE LOCK (SQMOR w/ 900 SERIES KNOB) MORTISE LOCK

Documents Prepared By:

**RW** BUILDING CONSULTANTS, INC.  
P.O. Box 230 Valrico FL 33595  
Phone No.: 813.659.9197  
Florida Board of Professional Engineers  
Certificate Of Authorization No. 9813  
*LFS* 12.30.13  
Lyndon F. Schmidt, P.E. No. 43409

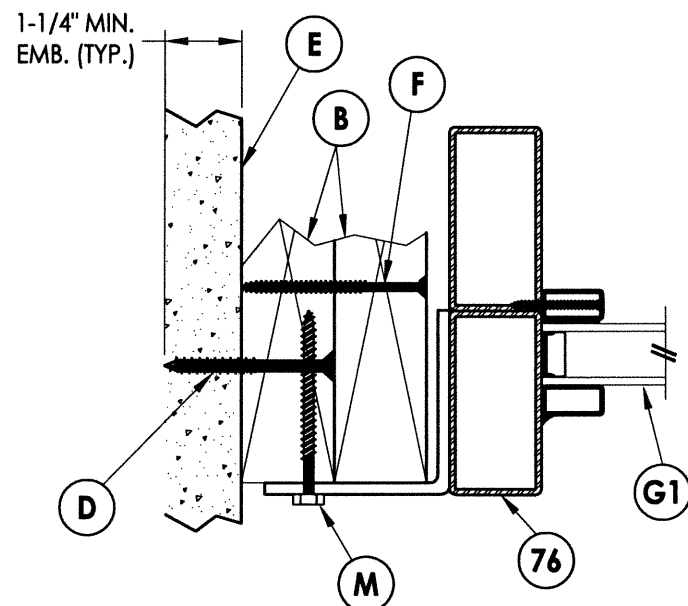
PRODUCT: CLARK HALL IRON DOORS

PART OR ASSEMBLY: ELEVATIONS

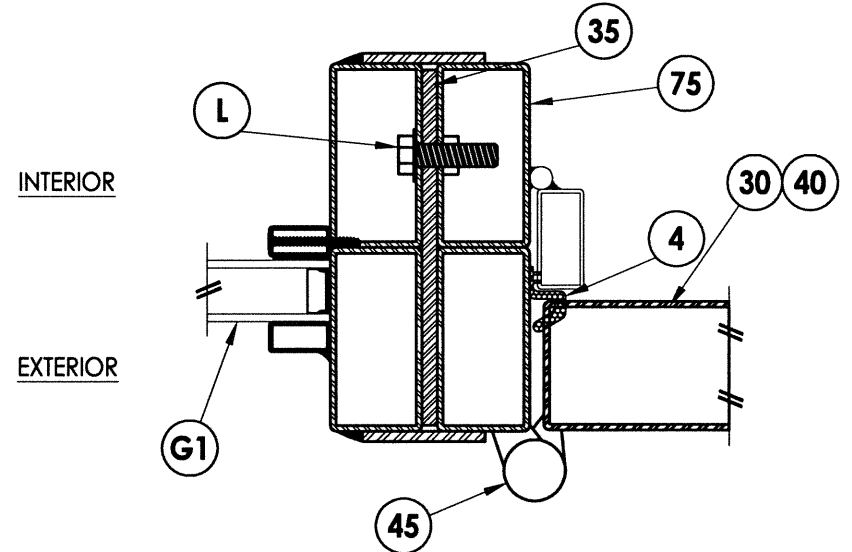
NO.	DATE	BY

DATE: 11/8/13  
SCALE: N.T.S.  
DWG. BY: JK  
CHK. BY: LFS  
DRAWING NO.: FL-16663.6  
SHEET 5 OF 13

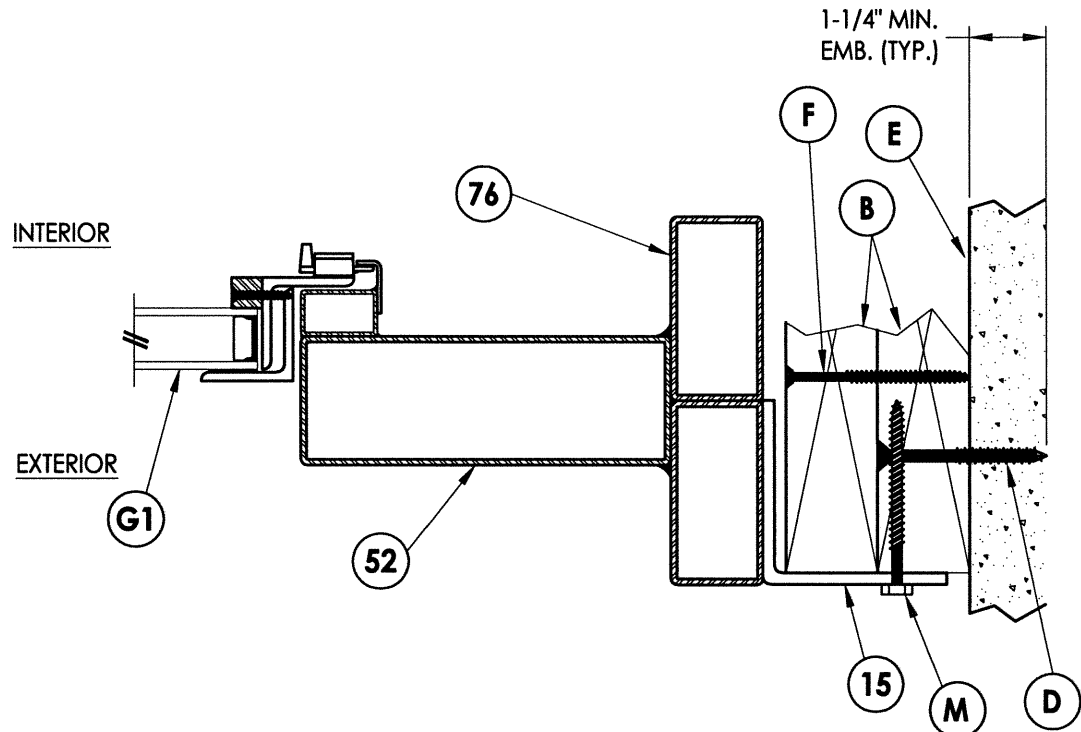
R:\A - Projects\Project Folders\Proj 1701 - 1800\PF 1733\D. RWBC Drawings\FL-16663.4-6.dwg, 6.6



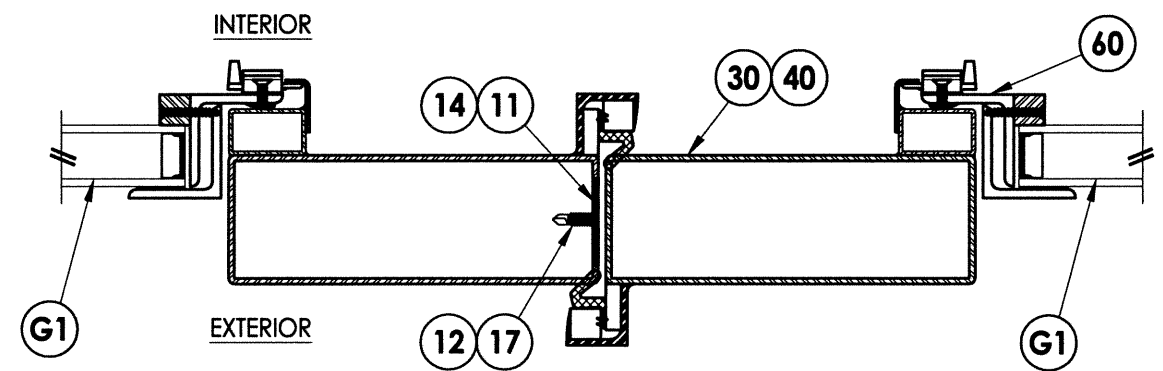
**1** HORIZONTAL CROSS SECTION  
6 Outswing Shown (Inswing Similar)



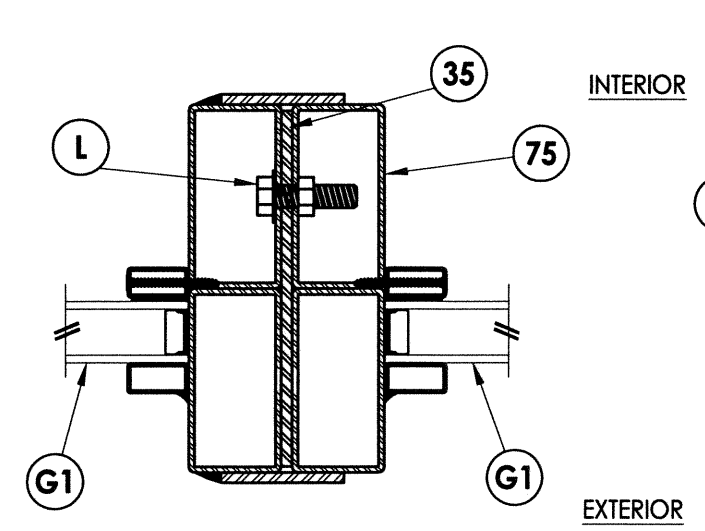
**2** HORIZONTAL CROSS SECTION  
6 Outswing Shown (Inswing Similar)



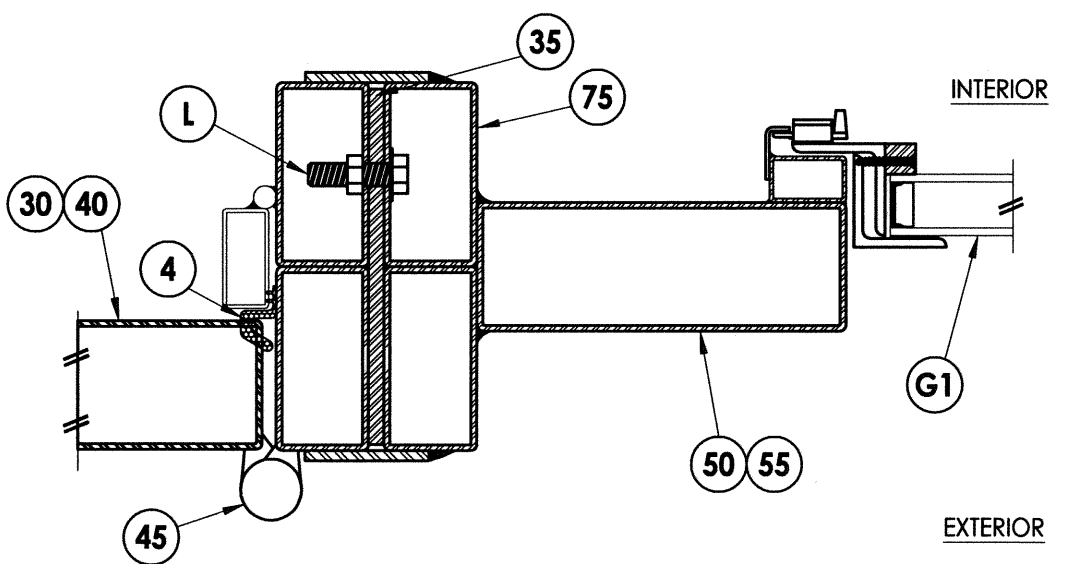
**7** HORIZONTAL CROSS SECTION  
6 Outswing Shown (Inswing Similar)



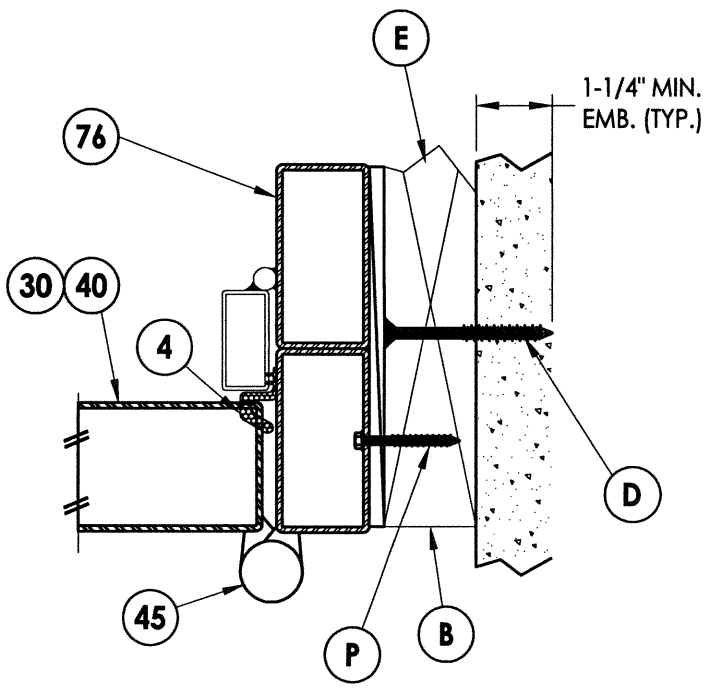
**3** HORIZONTAL CROSS SECTION  
6 Outswing Shown (Inswing Similar)



**6** HORIZONTAL CROSS SECTION  
6 Outswing Shown (Inswing Similar)



**4** HORIZONTAL CROSS SECTION  
6 Outswing Shown (Inswing Similar)



**5** HORIZONTAL CROSS SECTION  
6 Shown w/ Optional Through the Frame Anchoring

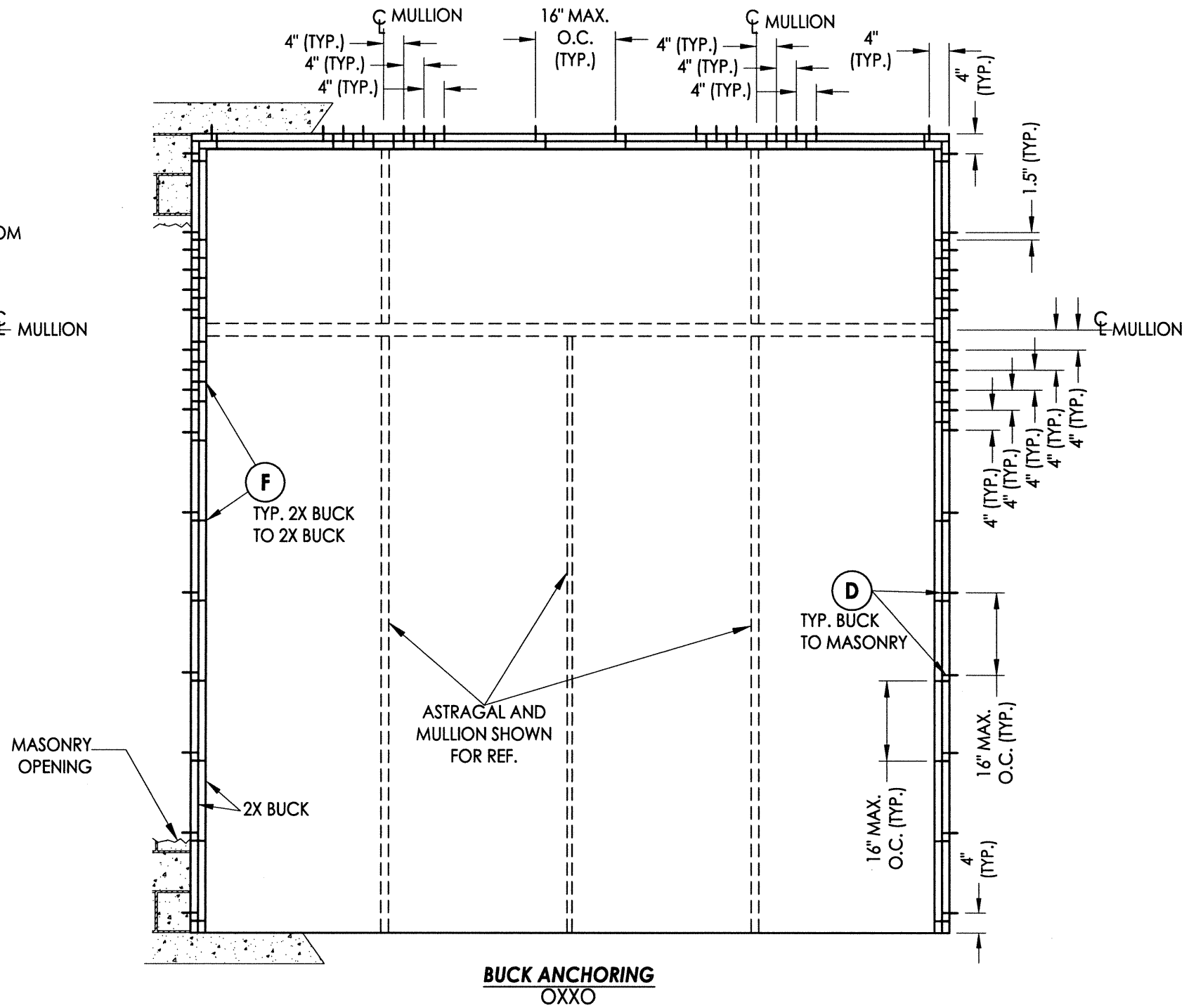
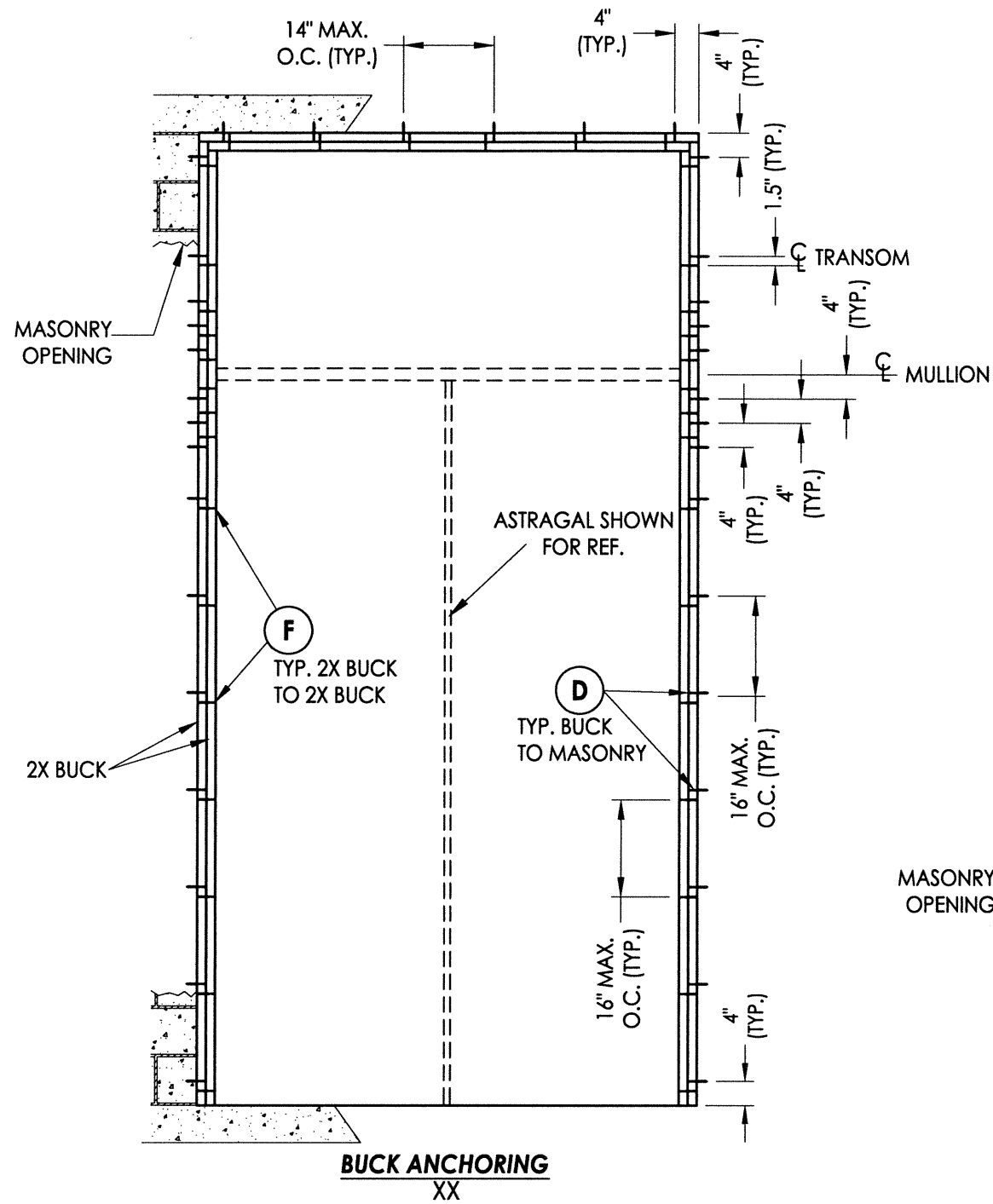
Documents Prepared By:  
**RW** BUILDING CONSULTANTS, INC.  
 P.O. Box 230 Valrico FL 33595  
 Phone No.: 813.659.9197  
 Florida Board of Professional Engineers  
 Certificate Of Authorization No. 9813  
 Lyndon F. Schmidt, P.E. No. 43409

PRODUCT: CLARK HALL IRON DOORS  
 PART OR ASSEMBLY: HORIZONTAL CROSS SECTIONS

NO.	DATE	BY

DATE: 11/8/13  
 SCALE: N.T.S.  
 DWG. BY: JK  
 CHK. BY: LFS  
 DRAWING NO.: FL-16663.6  
 SHEET 6 OF 13





**CONCRETE ANCHOR NOTES:**

1. Concrete anchor locations at the corners may be adjusted to maintain the min. edge distance to mortar joints.
2. Concrete anchor locations noted as "MAX. ON CENTER" must be adjusted to maintain the min. edge distance to mortar joints, additional concrete anchors may be required to ensure the "MAX. ON CENTER" dimension are not exceeded.
3. Concrete anchor table:

ANCHOR TYPE	ANCHOR SIZE	MIN. EMBEDMENT	MIN. CLEARANCE TO MASONRY EDGE	MIN. CLEARANCE TO ADJACENT ANCHOR
ITW TAPCON®	1/4"	1-1/4"	2-1/2"	4"
ELCO ULTRACON®	1/4"	1-1/4"	2-1/2"	4"

Documents Prepared By:  
**RW** BUILDING CONSULTANTS, INC.  
 P.O. Box 230 Valrico FL 33595  
 Phone No.: 813.659.9197  
 Florida Board of Professional Engineers  
 Certificate Of Authorization No. 9813  
 17-PL-12-30-13  
 Lyndon F. Schmidt, P.E. No. 43409

PRODUCT: CLARK HALL IRON DOORS  
 PART OR ASSEMBLY: BUCK ANCHORING

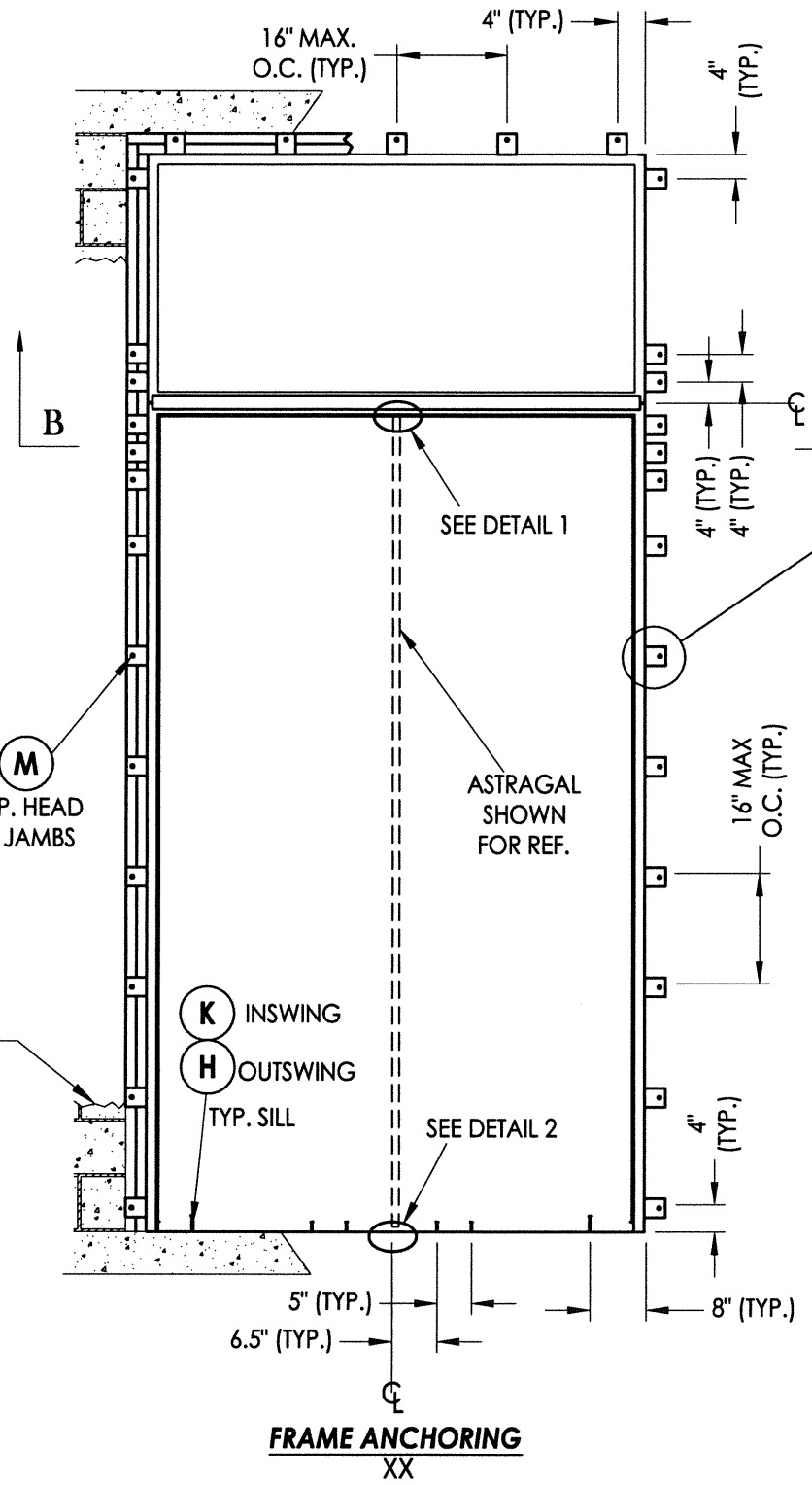
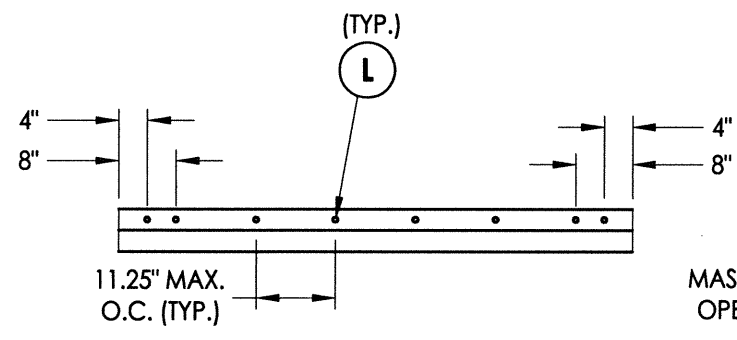
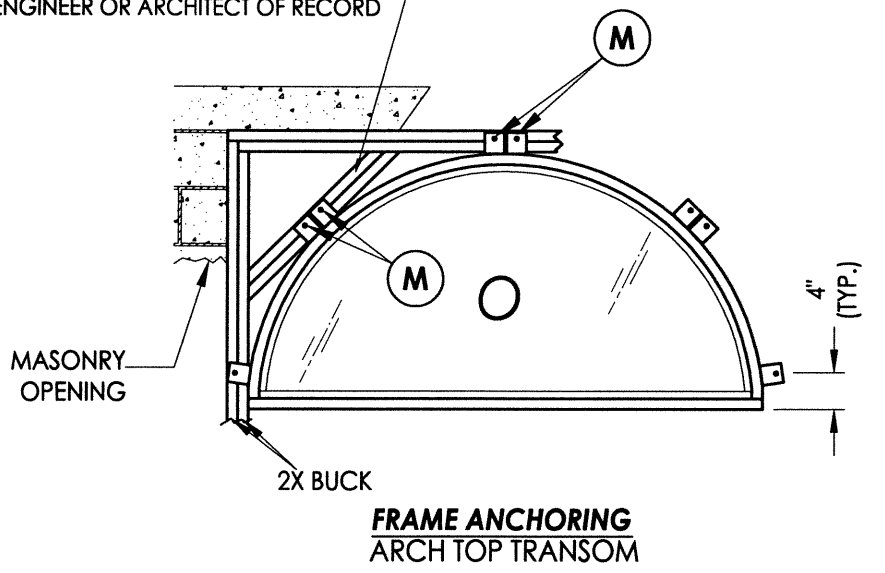
NO.	DATE	BY

DATE: 11/8/13  
 SCALE: N.T.S.  
 DWG. BY: JK  
 CHK. BY: LFS  
 DRAWING NO.: FL-16663.6  
 SHEET 8 OF 13

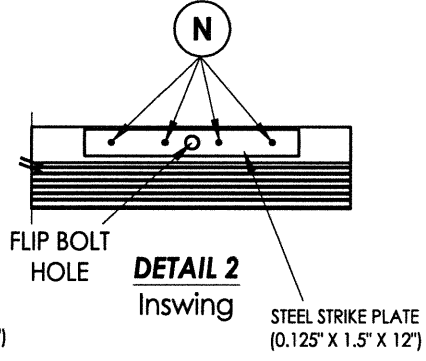
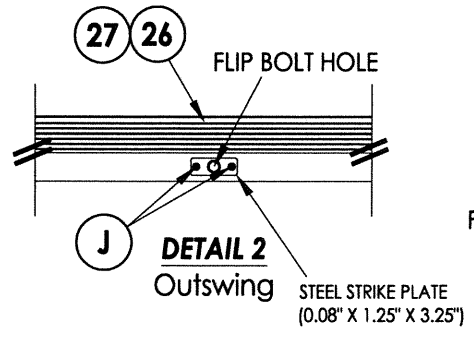
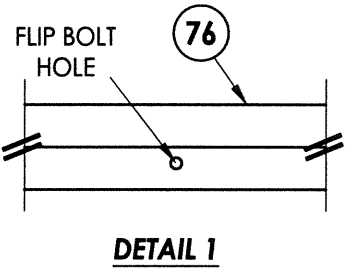
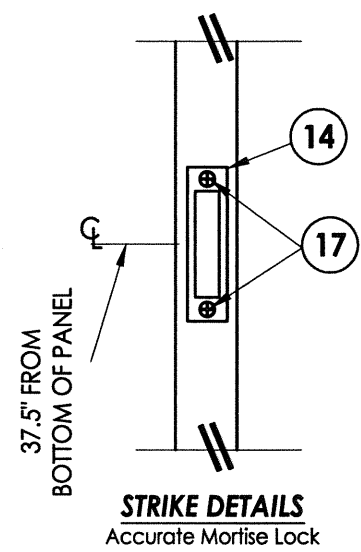
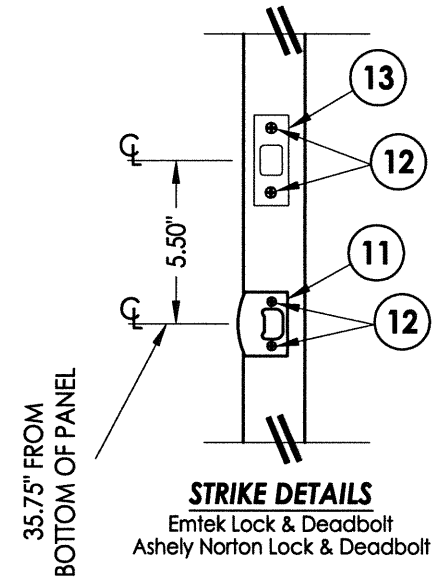
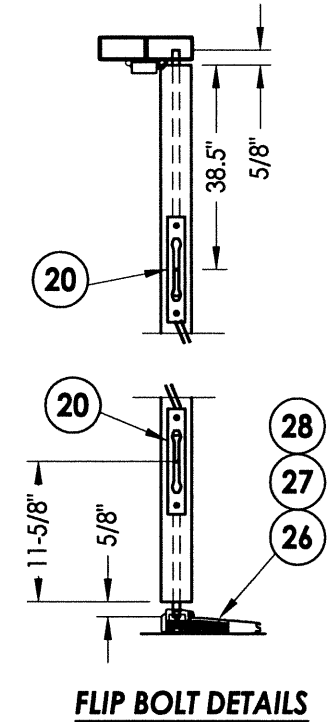
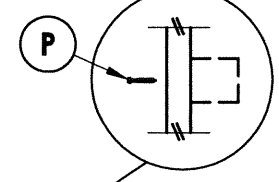


R:\A - Projects\Project Folders\Proj 1701 - 1800\PF 1733\D. RWBC Drawings\FL-16663.4-6.dwg, 9.6

2X FRAMING TO BE DESIGNED BY THE ENGINEER OR ARCHITECT OF RECORD



**ALTERNATE ANCHORING**  
THROUGH THE FRAME  
SUBSTITUTE ANCHOR @ EACH BRACKET



**CONCRETE ANCHOR NOTES:**

1. Concrete anchor locations at the corners may be adjusted to maintain the min. edge distance to mortar joints.
2. Concrete anchor locations noted as "MAX. ON CENTER" must be adjusted to maintain the min. edge distance to mortar joints, additional concrete anchors may be required to ensure the "MAX. ON CENTER" dimension are not exceeded.
3. Concrete anchor table:

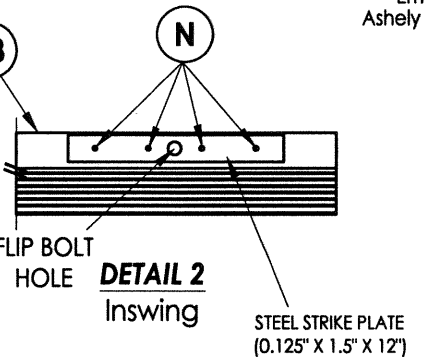
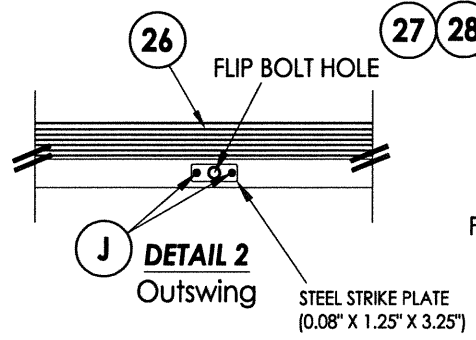
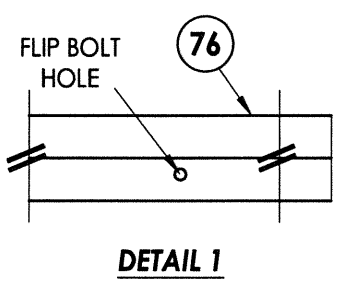
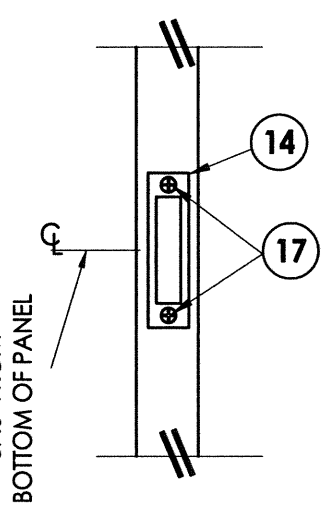
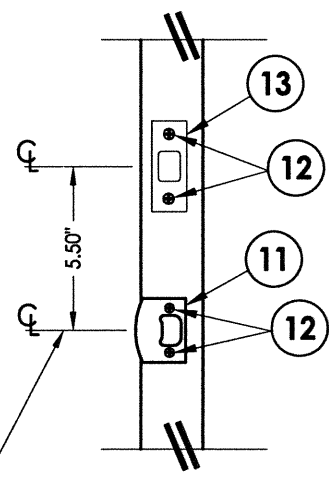
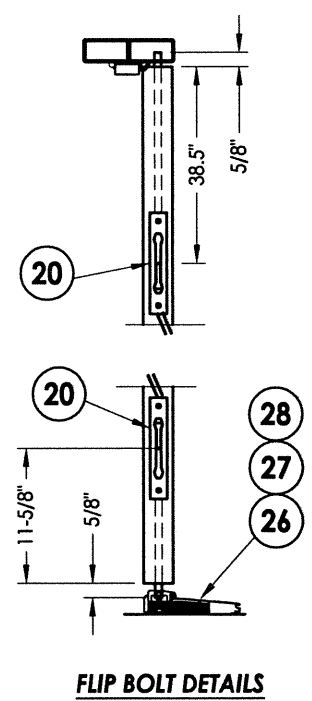
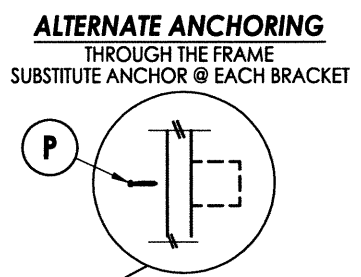
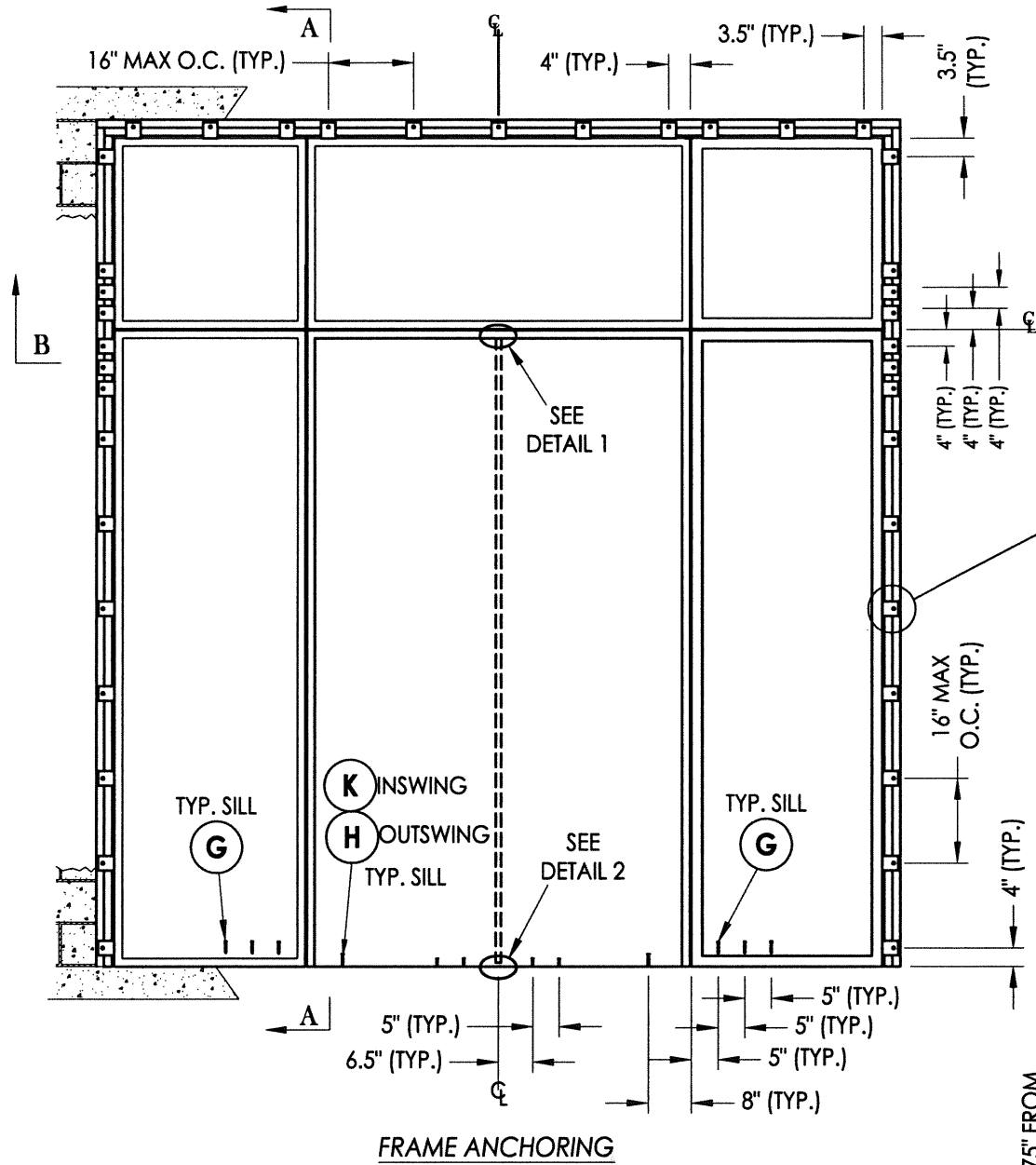
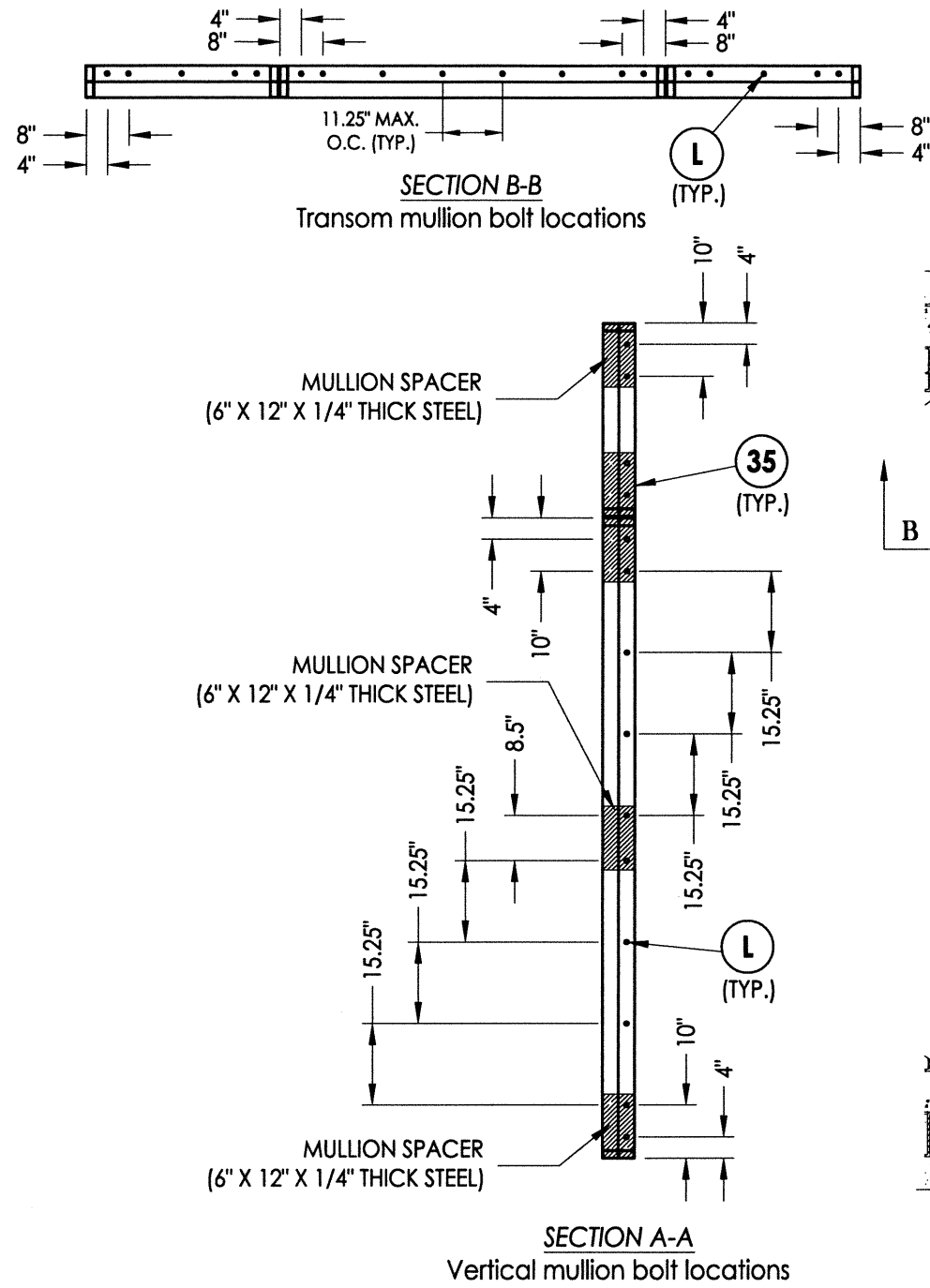
ANCHOR TYPE	ANCHOR SIZE	MIN. EMBEDMENT	MIN. CLEARANCE TO MASONRY EDGE	MIN. CLEARANCE TO ADJACENT ANCHOR
ITW TAPCON®	3/16"	1-1/4"	3"	2-1/2"
	1/4"	1-1/4"	2-1/2"	4"
	5/16" (XL)	1-3/4"	2-1/2"	5"
ELCO ULTRACON®	1/4"	1-1/4"	2-1/2"	4"
	5/16"	1-3/4"	2-1/2"	5"

Documents Prepared By:  
**RW** BUILDING CONSULTANTS, INC.  
 P.O. Box 230 Valrico FL 33595  
 Phone No.: 813.659.9197  
 Florida Board of Professional Engineers  
 Certificate Of Authorization No. 9813  
 LFS 12-3-13  
 Lyndon F. Schmidt, P.E. No. 43409

PRODUCT: CLARK HALL IRON DOORS  
 PART OR ASSEMBLY: FRAME ANCHORING

NO.	DATE	BY	REVISIONS

DATE: 11/8/13  
 SCALE: N.T.S.  
 DWG. BY: JK  
 CHK. BY: LFS  
 DRAWING NO.: FL-16663.6  
 SHEET 9 OF 13



**CONCRETE ANCHOR NOTES:**

- Concrete anchor locations at the corners may be adjusted to maintain the min. edge distance to mortar joints.
- Concrete anchor locations noted as "MAX. ON CENTER" must be adjusted to mortar joints, additional concrete anchors may be required to ensure the "MAX. ON CENTER" dimension are not exceeded.
- Concrete anchor table:

ANCHOR TYPE	ANCHOR SIZE	MIN. EMBEDMENT	MIN. CLEARANCE TO MASONRY EDGE	MIN. CLEARANCE TO ADJACENT ANCHOR
ITW TAPCON®	3/16"	1-1/4"	3"	2-1/2"
	1/4"	1-1/4"	2-1/2"	4"
	5/16" (XL)	1-3/4"	2-1/2"	5"
ELCO ULTRACON®	1/4"	1-1/4"	2-1/2"	4"
	5/16"	1-3/4"	2-1/2"	5"

Documents Prepared By: **RW** BUILDING CONSULTANTS, INC.  
 P.O. Box 230 Valrico FL 33595  
 Phone No.: 813.659.9197  
 Florida Board of Professional Engineers  
 Certificate Of Authorization No. 9813  
 Lyndon F. Schmidt, P.E. No. 43409

PRODUCT: CLARK HALL IRON DOORS  
 PART OR ASSEMBLY: FRAME ANCHORING

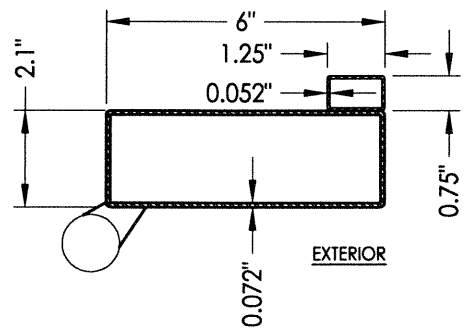
NO.	DATE	REVISIONS	BY

DATE: 11/8/13  
 SCALE: N.T.S.  
 DWG. BY: JK  
 CHK. BY: LFS  
 DRAWING NO.: FL-16663.6  
 SHEET 10 OF 13

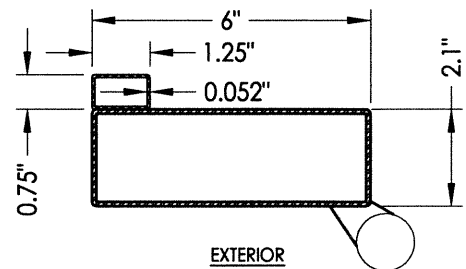
© 2013 R.W. BUILDING CONSULTANTS INC.



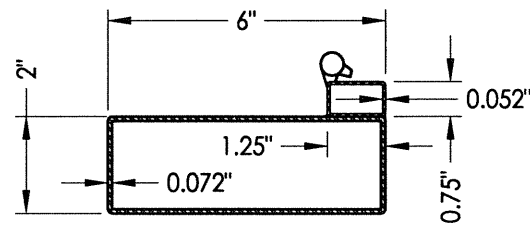
R:\A - Projects\Project Folders\Proj 1701 - 1800\PF 1733D.RWBC Drawings\FL-16663.4-6.dwg, 12.6



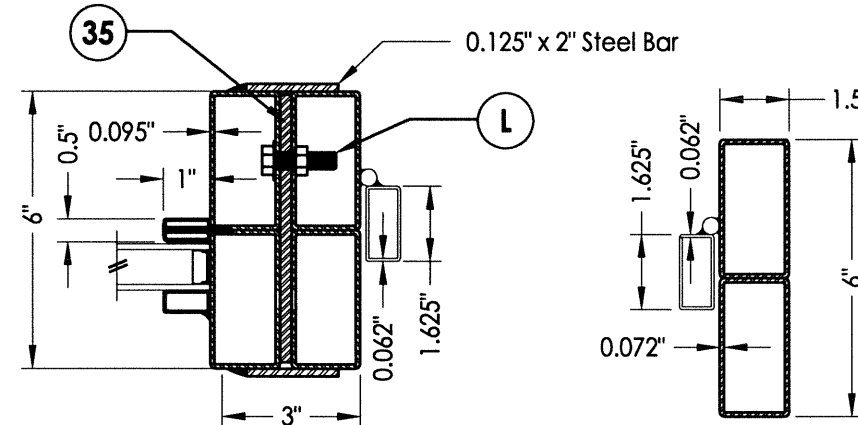
**41 Full Lite Door Panel**  
Inactive Hinge Stile



**31 Full Lite Door Panel**  
Active Hinge Stile

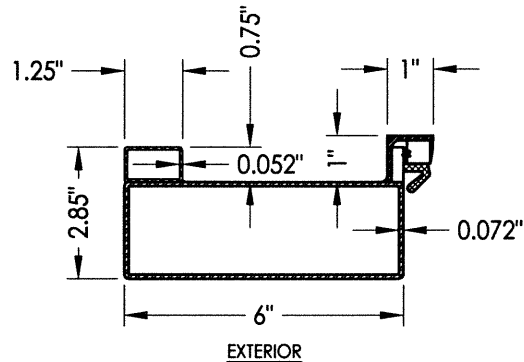


**51 Sidelite Panel**  
Operable Sash Hinge Stile

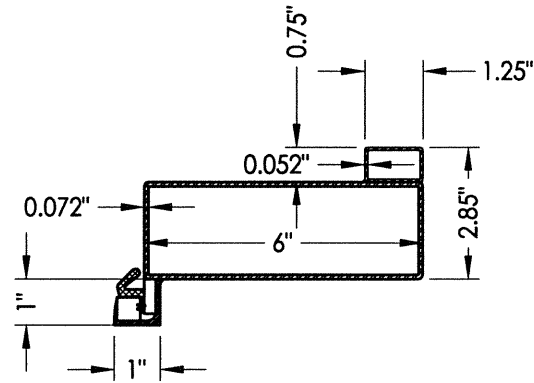


**75 MULLION**  
Vertical with Direct Set Sidelite shown  
(Horizontal Mullion Similar)

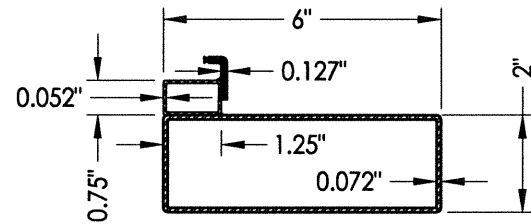
**76 Jamb**



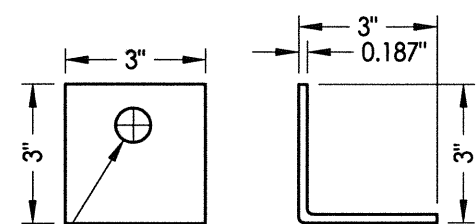
**42 Full Lite Door Panel**  
Inactive Latch Stile



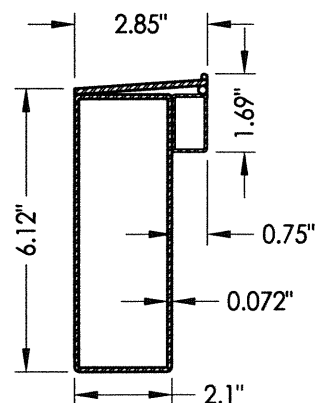
**32 Full Lite Door Panel**  
Active Latch Stile



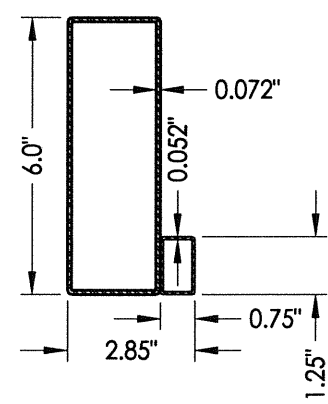
**52 Sidelite Panel**  
Operable Sash Latch Stile



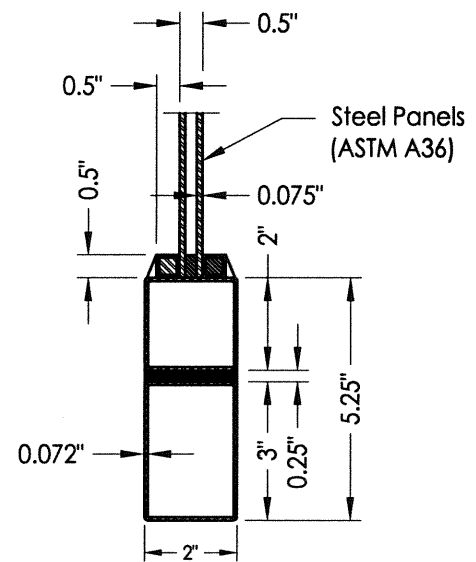
**15 ANCHOR BRACKET**



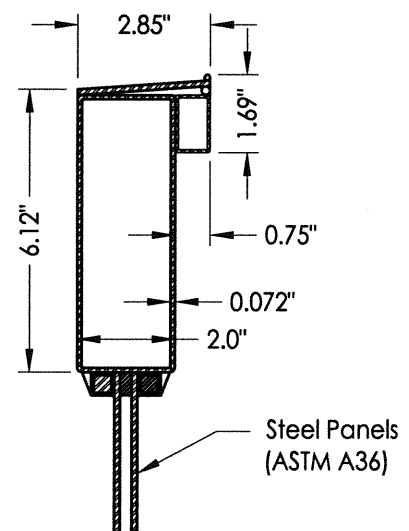
**43 Full Lite Door Panel**  
Bottom Rail



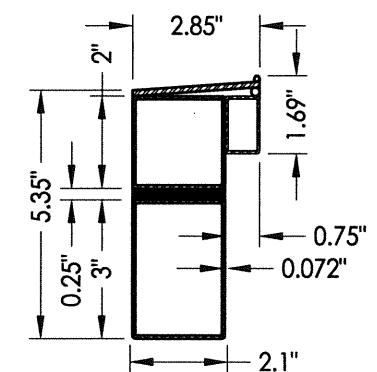
**44 Full Lite Door Panel**  
Top Rail



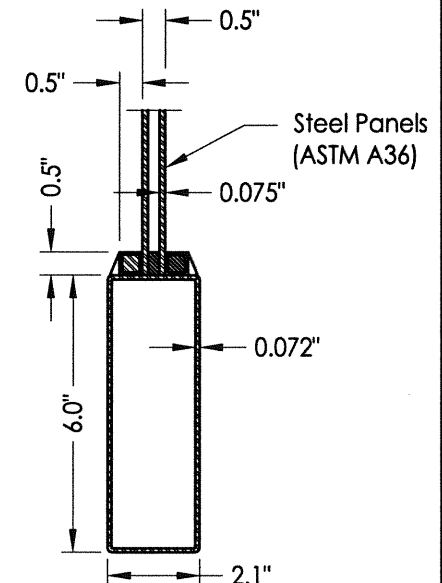
**54 Bottom Rail**  
3/4 Lite Sidelite Panel



**56 Mid Rail**  
3/4 Lite Sidelite Panel



**53 Bottom Rail**  
Sidelite Panel



**57 Bottom Rail**  
3/4 Lite Door Panel

Documents Prepared By:  
**RW** BUILDING CONSULTANTS, INC.  
 P.O. Box 230 Valrico FL, 33595  
 Phone No.: 813.659.9197  
 Florida Board of Professional Engineers  
 Certificate Of Authorization No. 9813  
*LFS* 12.30.13  
 Lyndon F. Schmidt, P.E. No. 43409

PRODUCT: CLARK HALL IRON DOORS  
 PART OR ASSEMBLY:  
 COMPONENTS

NO.	DATE	REVISIONS	BY

DATE: 11/8/13  
 SCALE: N.T.S.  
 DWG. BY: JK  
 CHK. BY: LFS  
 DRAWING NO.: FL-16663.6  
 SHEET 12 OF 13

